



When product integrity counts...
Manufacturers of laboratory calibrated temperature and humidity data loggers, real-time monitoring and cold chain solutions

Temprecord TRW 6.3 Software Guide

How to use Temprecord Data Loggers and Software

The following are quick instructions only. Please note there is a full Help document built into:

1. The software in the Menu bar and;
2. PDF format in the Help tab drop down menu

Requirements before first use:

Temprecord Data Logger, Reader Interface & Software

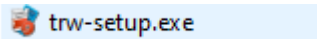


Software Installation:

TRW 6.3 software is available by downloading from the Temprecord website at:
<https://temprecord.com/our-software/temprecord-windows-software/>

Log on as Administrator to install software. Do not plug in reader until after software is installed.

- **Download Software and save file from Downloads folder to PC Desktop or other folder.**
- **Right click TRW6.3 Folder and select "Extract All"**

- **Click on** 
- **Follow prompts until installation is complete**
- **Plug in reader**
- **Reboot PC**


Temprecord 6.3 Guide

Software Quick Icons:

Note, using the menu tabs or right clicking mouse button will also allow access to the some of the same tasks as the quick icons. Hover over the quick icons to bring up hints that identify function.

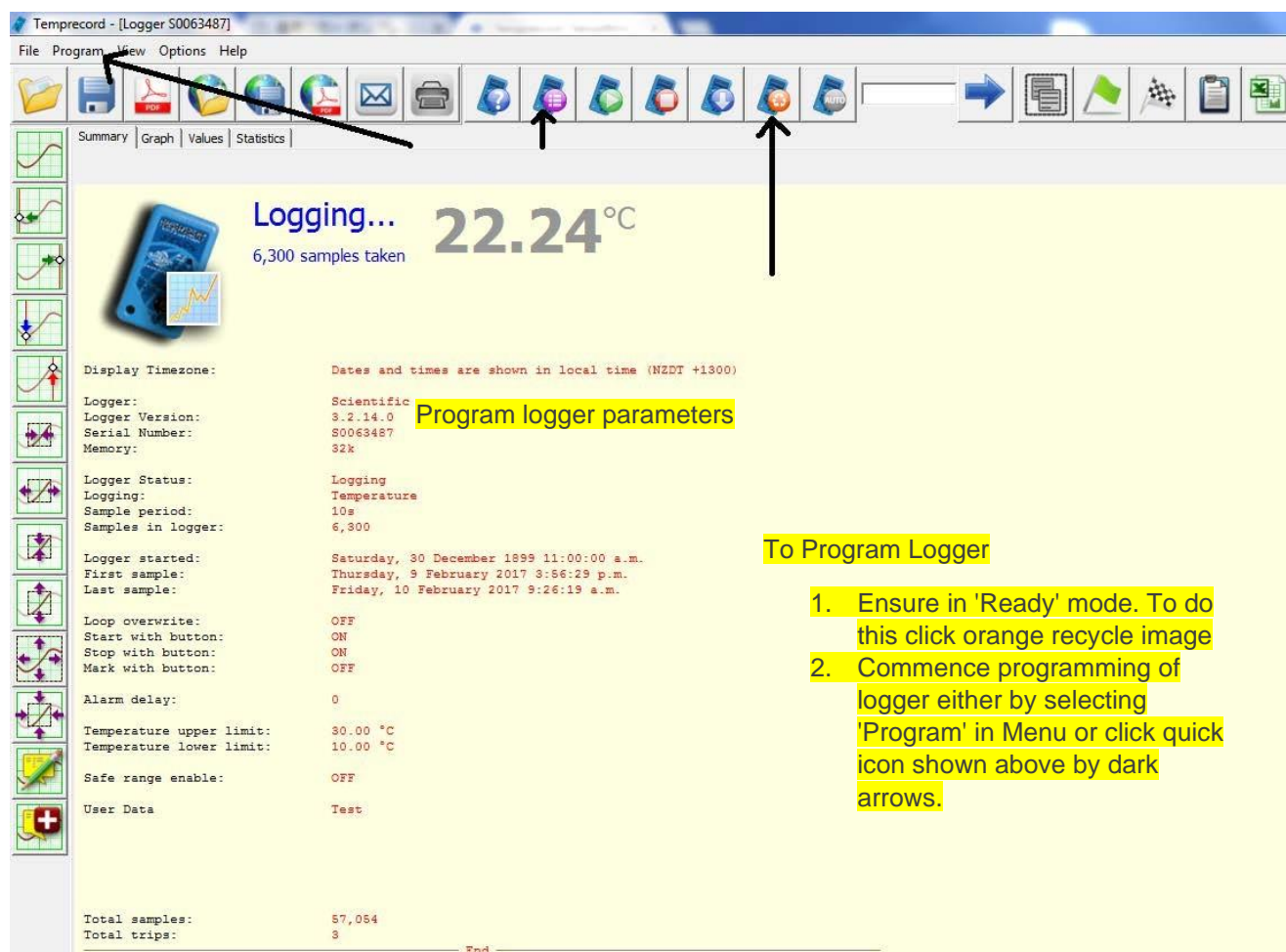


To access logger:

Insert logger in Reader Interface ensuring logger is placed in reader as far as it can go, and the hole is visible outside the reader. Access logger by tapping the Space Bar on the keyboard or by clicking the 'Query logger' icon: 

To program logger:

Either select **Program** on Menu bar or click **Parameters** icon and populate as required. To do this the logger must first be in "Ready" mode. See diagram below:



Logging... 22.24 °C
6,300 samples taken

Display Timezone: Dates and times are shown in local time (NZDT +1300)

Logger: Scientific
Logger Version: 3.2.14.0
Serial Number: S0063487
Memory: 32k

Logger Status: Logging
Logging: Temperature
Sample period: 10s
Samples in logger: 6,300

Logger started: Saturday, 30 December 1899 11:00:00 a.m.
First sample: Thursday, 9 February 2017 3:56:29 p.m.
Last sample: Friday, 10 February 2017 9:26:19 a.m.

Loop overwrite: OFF
Start with button: ON
Stop with button: ON
Mark with button: OFF

Alarm delay: 0
Temperature upper limit: 30.00 °C
Temperature lower limit: 10.00 °C

Safe range enable: OFF

User Data: Test

Total samples: 57,054
Total trips: 3

End

Program logger parameters

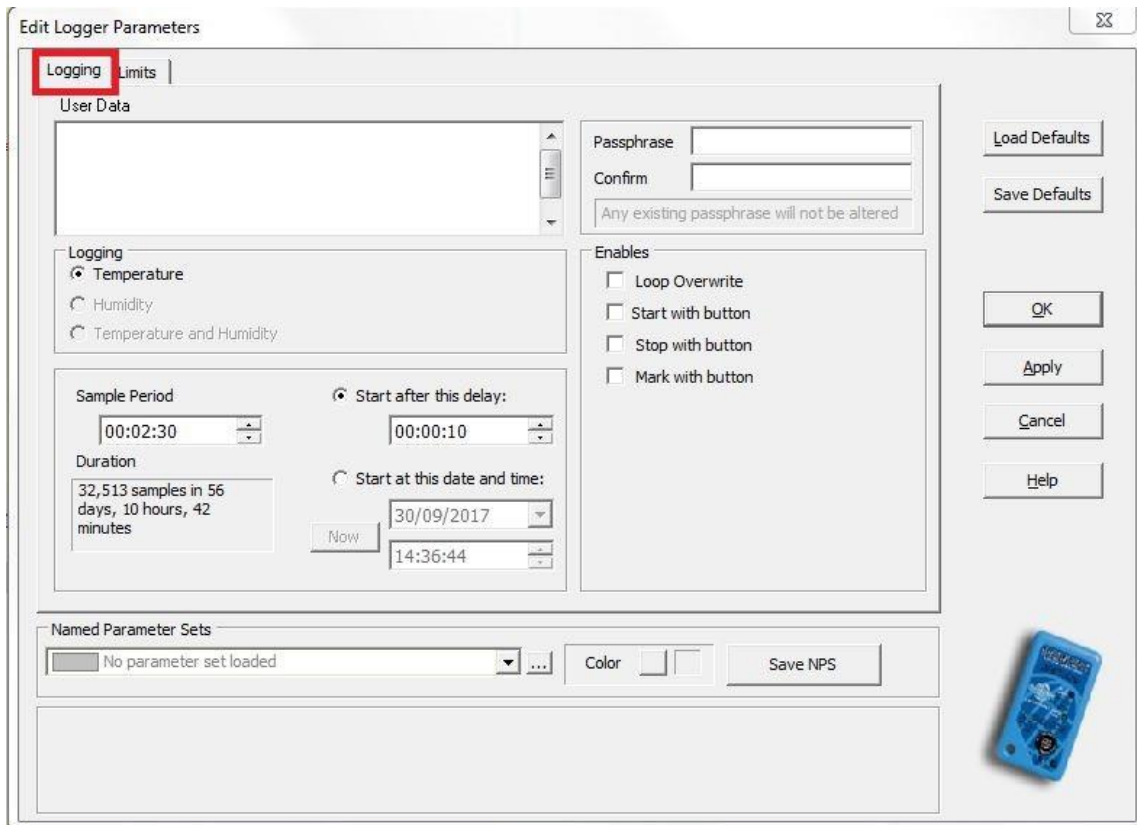
To Program Logger

1. Ensure in 'Ready' mode. To do this click orange recycle image
2. Commence programming of logger either by selecting 'Program' in Menu or click quick icon shown above by dark arrows.

Temprecord 6.3 Guide

Parameters screens for population:

Please note there are two parameter screens



Edit Logger Parameters

Logging Limits

User Data

Passphrase

Confirm

Any existing passphrase will not be altered

Load Defaults

Save Defaults

Logging

Temperature

Humidity

Temperature and Humidity

Sample Period

Start after this delay:

Duration

32,513 samples in 56 days, 10 hours, 42 minutes

Start at this date and time:

Now

Enables

Loop Overwrite

Start with button

Stop with button

Mark with button

OK

Apply

Cancel

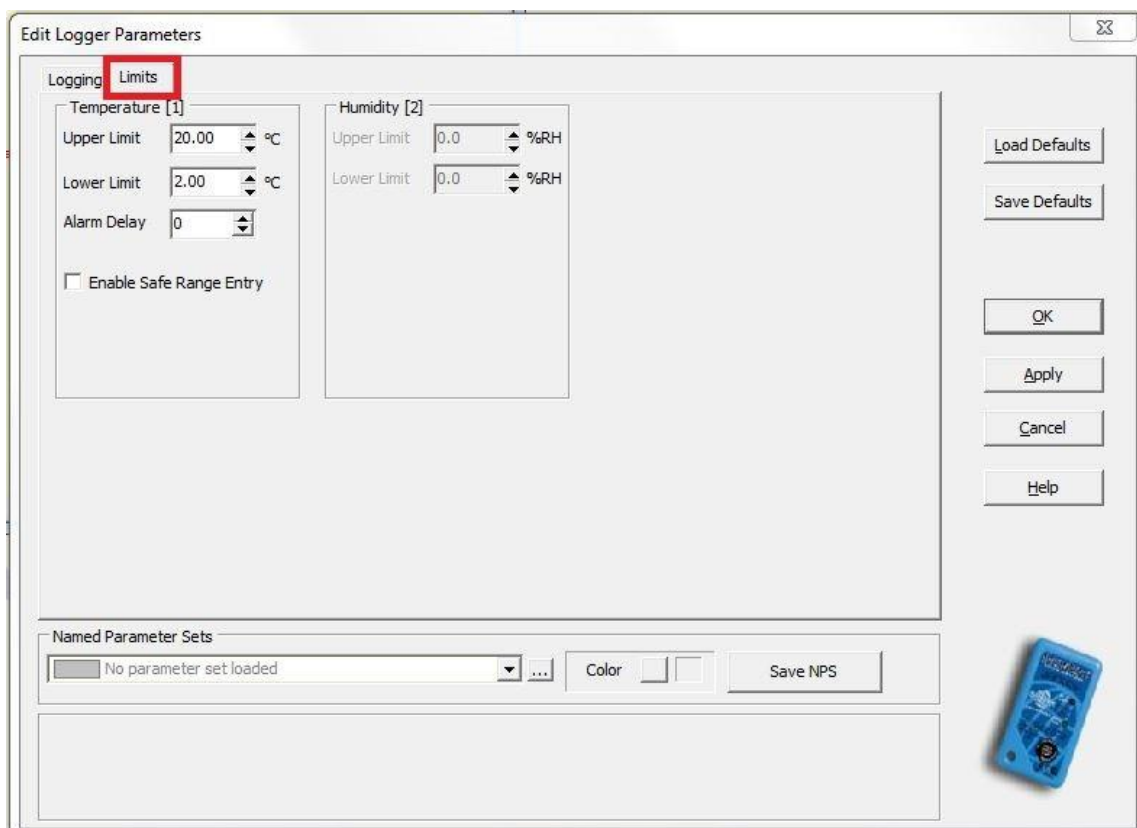
Help

Named Parameter Sets

No parameter set loaded

Color

Save NPS



Edit Logger Parameters

Logging **Limits**

Temperature [1]

Upper Limit °C

Lower Limit °C

Alarm Delay

Enable Safe Range Entry

Humidity [2]

Upper Limit %RH

Lower Limit %RH

Load Defaults

Save Defaults

OK

Apply

Cancel

Help

Named Parameter Sets

No parameter set loaded

Color

Save NPS

Temprecord 6.3 Guide

Start Logger:

Either start with software using **Start Logger** icon, or use button on logger **if enabled in software** when programming the logger.



Start logger

Read Logger:

To read logger click quick icon showing the shape of a blue logger as shown in the screenshot below.



Read logger

Stop Logger:

Click **Stop Logger** icon. Note that data will still be in the logger and either the green or red LED will continue to flash either within limits (green) or outside limits (red). Display Logger will show the **Stop** icon. Note that data is still present.

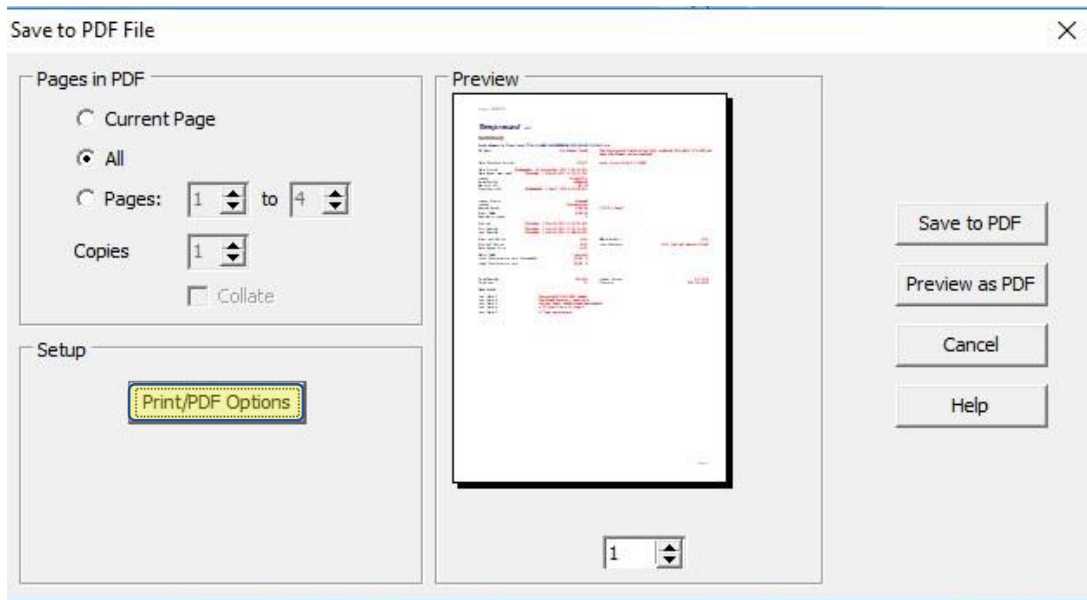


Stop logger

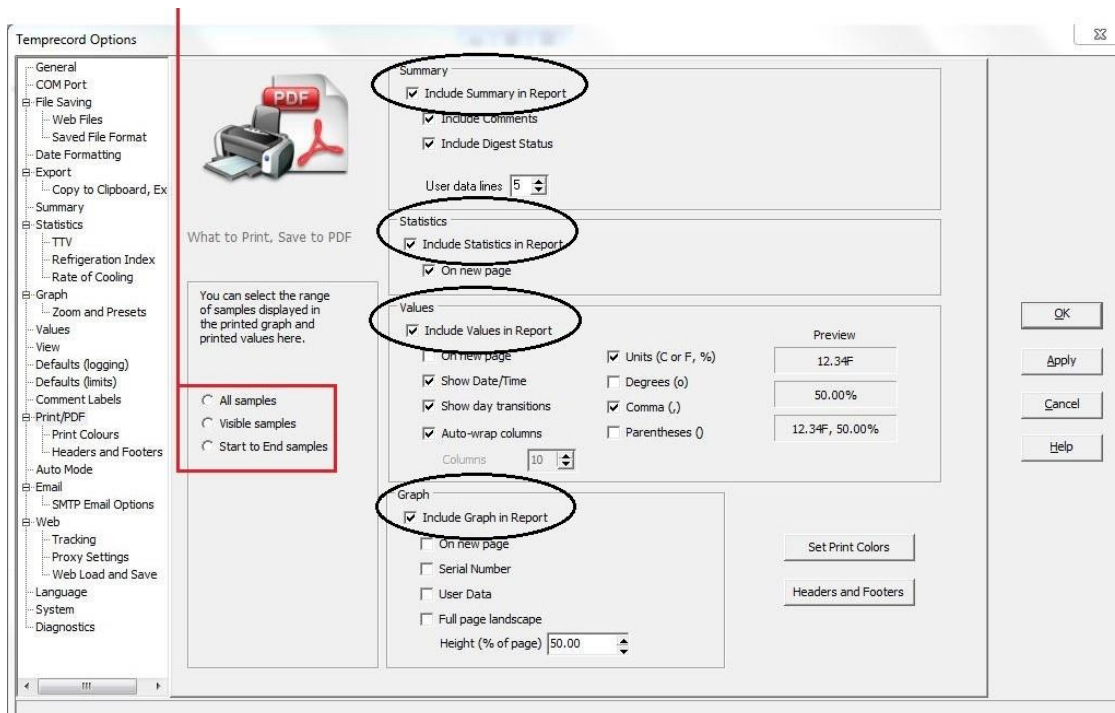
Temprecord 6.3 Guide

Print or create PDF file:

Select **Print** or **PDF** icon in TRW Tool bar. **Save to PDF file** options as shown below will pop up. select **Print/PDF Options** (highlighted below):



Note: Ensure correct view is selected



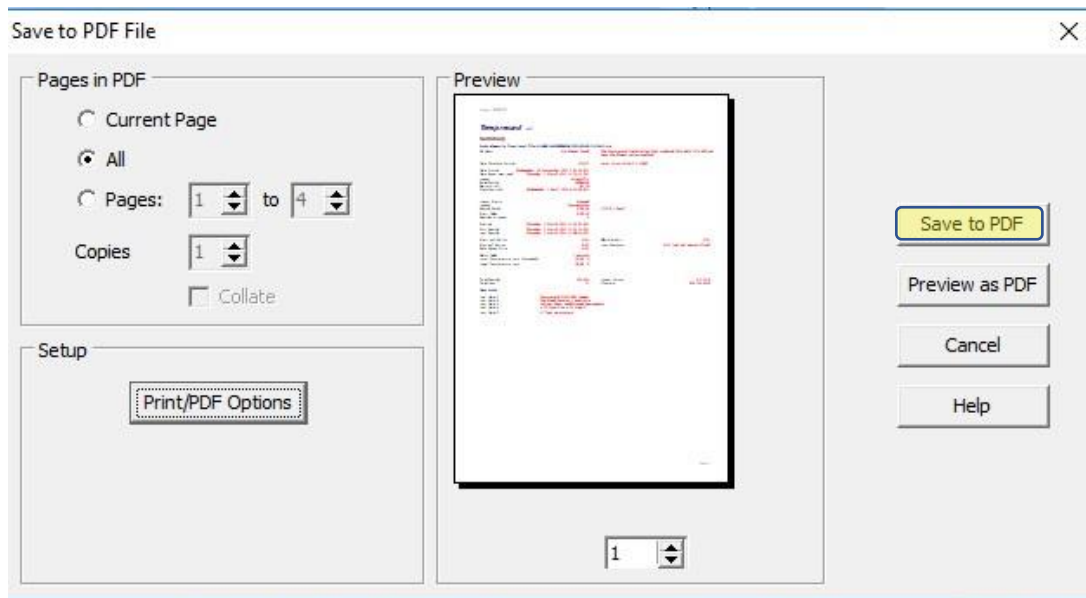
Select as required - remember to enable all Summary, Statistics, Graph and Values screens as required.

To save a file:

On Menu bar select File + Save File or select the quick icon Save Temprecord Data File to Disc (second icon from left). To save the file in the same folder every time without having to browse to find the folder, please see separate attached document – “File Saving”.

To save a file as PDF:

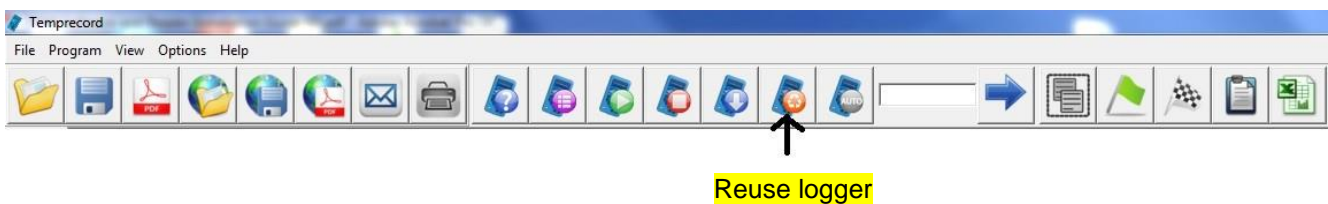
Select the PDF Icon in the TRW toolbar. **Save to PDF**



Select **Save to PDF**

Re-Use Logger:

To re-use or re-program the logger, it must be in a **Ready** state. Click **Reuse Logger** icon (Orange recycle icon). Data will be cleared and logger LED will no longer flash until recommencement of logging.



Logger is now read to be started again.

Contact us...

Email: info@temprecord.com

Phone: +64 9 274 9825